



The versatile Enrange Flex M wireless receiver features a modular plug-and-play design (similar to a PLC) which allows one plant to use the same type of receiver component for any size application. Each essential part of a wireless receiver is built into compact, machine mountable modules. The family of modules can then be combined together to form a complete radio receiver system. The versatile Flex M can provide digital, analog or serial interfaces, and is capable of one-way or two-way communication. Flex M can manage systems ranging from simple relay outputs to complex I/O and communication networks.

### SYSTEM STRUCTURE

Each module is connected by an integral side connector that supplies internal communications and power.

- Consists of a RF/CPU serving as the brains of the system
- Another component is the selected power module
- As many output (relay or other) or input modules as needed for the application can be added
- LED lights provide diagnostics for each individual module
- Each module has up to four removable connectors for easy wiring and replacement of any modules

### VERSATILE AND CUSTOMIZABLE DESIGN

- Engineered system offers the choice of I/O and RF power
- System can expand for different applications, making it ideal for plant wide use
- Features 35mm din rail mountable modules
- Systems requiring data feedback such as load weight are available
- Can be coupled with a user-operated transmitter or configured with another Flex M for point-to-point communications

### RANGE OF MODULES AVAILABLE

- Power supply modules: 120 Vac  
12-48 Vdc
- Two-way and high power 200mW (3000+ foot) RF modules
- Digital and analog input modules
- RS-232, RS-422, and CAN-BUS serial communication modules
- Mechanical relay output modules
- Analog (0 to +/- 10 Vdc) output modules



## PERFECT FOR USE IN A VARIETY OF APPLICATIONS

The Enrange Flex M can be customized to meet almost any application. Magnetek provides innovative, cost-effective, custom-engineered radio remote controls complete with crane interface controls. These are designed to your specifications, reducing internal engineering and manufacturing costs, improving time to market, and enhancing equipment performance. We offer complete plug-and-play control packages designed specifically for your material handling equipment, manufactured and tested on our panel assembly line.

## AVAILABLE SYSTEMS

### Radio Drive Serial Interface (RDSI)

The RDSI module is designed to communicate via a serial interface to directly control Magnetek's IMPULSE®•G+/VG+ Series 3 and IMPULSE®•G+ Mini Adjustable Frequency Crane Controls (consult factory for compatibility if you have an existing RDSI setup with a Series 2 drive). It provides users with diagnostic and troubleshooting information on the ground so there is no need to get up on the crane.

- Automatically detects drive types
- Eliminates the need for drive contactors
- Provides feedback parameters directly from the drive, including Drive Status, Output Frequency, Output Voltage, Output Current, Output Power, and Torque Reference
- Reduces system costs by eliminating relay cards, excessive wiring and labor

### Pre-Engineered Systems

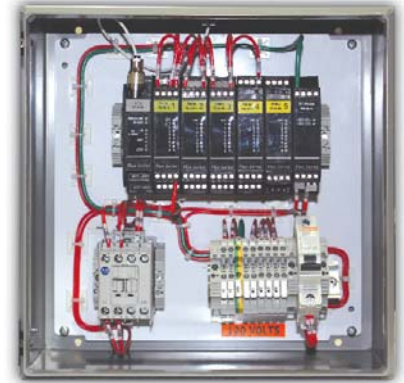
Our Pre-engineered systems are packaged with one of our versatile transmitters, and offer features not found in most off-the-shelf systems.

- Modules mounted in a sealed NEMA 4 enclosure
- Industrial 10 amp main line relay mounted and pre-wired to terminal strip
- Circuit breakers for power protection mounted and pre-wired to terminal strip
- Antenna kit supplied and ready for field install
- Available in 16, 24, and 32 output configurations
- 32 RF channels, license-free, 902-928MHz
- Optional 4-pole transfer switch for effective isolation and pre-wire output cable

### Customized, Engineered Systems

We'll build a system to your exact specifications.

- Modules mounted in a sealed enclosure (NEMA 4, 12, or stainless)
- Industrial 10 amp main line relay mounted and pre-wired to terminal strip
- Circuit breakers provided for power protection
- Antenna kit supplied and ready for field install
- Available in 16, 24, 32, 40, 48, and 56 output configurations
- Various RF choices
  - 32 RF channels, license-free, 902-928MHz band, TMS signaling
  - 32 RF channels, license-free, 400MHz band, TMS signaling
  - 32 RF channels, license-free, 900 and 2.4GHz, FHSS signaling
- Stepless (0-5 Vdc, 0-10 Vdc, 0+/-10 Vdc) interfaces available
- Available in 24 Vac and 12 to 48 Vdc power supplies
- Two-way RF communications for feedback applications available
- RS-232, RS-485, and CAN-bus communication for network applications available
- Digital and analog input capability for interfacing to other devices such as scale (load weight) devices and limit switches
- Transfer switch options include Effective, Directional, and Complete isolation with 4, 10, 14, or 20 pole switches. Relay isolation also available.
- Auxiliary latching relays for lift devices available
- Stepless static (0-20V) interface
- Custom programming as application requires



For more information, contact Magnetek Material Handling or your local Magnetek Sales Representative.



**MAGNETEK**  
MATERIAL HANDLING

**ENRANGE**

N49 W13650 Campbell Drive  
Menomonee Falls, WI 53051  
Toll-Free Phone 800.288.8178  
Toll-Free Fax 800.298.3503  
Phone 262.783.3500  
Fax 262.783.3510

ENRANGE FACILITY  
#5 Four Coins Drive  
Canonsburg, PA 15317-1751  
Phone 800.288.8178  
Fax 800.298.3503

CANADA FACILITY  
4090B Sladeview Crescent  
Mississauga, Ontario  
L5L 5Y5 CANADA  
Phone 800.792.7253  
Fax 905.828.5707

WWW.MAGNETEKMH.COM  
sales@magnetek.com

Pub No. flexM\_11  
© Magnetek, Inc. 2011